



## EZ2KV, 630

White Under Coat  
Water Base

### Uses

is designed for use as an undercoat based on Acrylic-Styrene resin and white pigment with excellent adhesion to most substrates such as plasterboard, Yellowtounge, Plywood, timber, render, cement sheet, etc. It is a very good stain blocker need to be tested on some stained substrate, it can be sprayed or rolled as a ceiling paint. Recommended for Primer, Undercoat, Ceiling paint, and Blocker.

### Environment & Health

Follow the appropriate Occupational Health and Safety guidelines applicable to the location where the application is undertaken. For more information, please refer to the safety datasheets for the individual components



UV Resistant



Exterior / Interior Paint



Water Base



Environmentally Friendly

CHEMSTUK Pty Ltd  
1/11 Industrial Avenue  
Thomastown  
Tel: +61 3 9936 0531  
[www.chemstuk.com](http://www.chemstuk.com)

### Packaging

The product is supplied in full units as a component pack.

EZ2KV	15 Litre
-------	----------

### Curing Times

Dry to touch	30 minutes
Hard dry	12 hours
Full curing	24 hours
Recoat interval, Min	12 hours
Recoat interval, Max	24 hours

### Additional Information

Colours	White
Finish	Flat
Solid Content (by Volume)-%	78±2
Theoretical spreading rate	11.3 m <sup>2</sup> /lit 30 Mic. 475 sq ft./US gallon- 1.18mils
Flashpoint	45°C
Specific gravity	1.4 kg/lit-10.08 lbs/US gallon
V.O.C.	Max.110 gr/lit
Shelf life	1 Year (25°C/77°F) from the time of production. Depending on storage conditions, mechanical stirring may be necessary before usage.

### Substrate Requirements

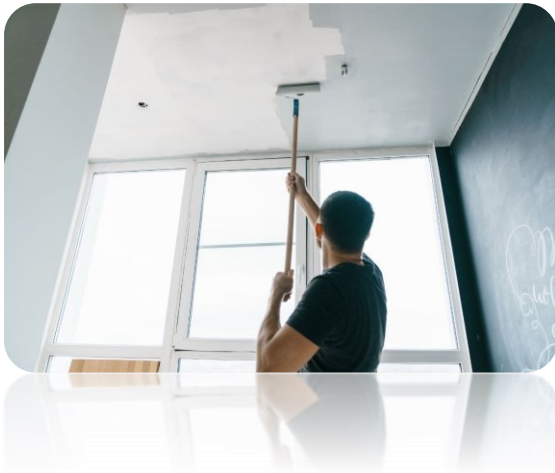
New adhesion promoter, clean the surface apply EZ2KV pretty good without sanding, light sand helps stick even better.

### Surface Preparation

All surfaces must be thoroughly cleaned and free of all loose dirt, grease, stains, mould,

➤ EZ2KV is a multipurpose water based 4 in 1 undercoat that can also be used as ceiling paint and as a wall primer and blocker. EZ2KV is very high build meaning it is perfect for filling and sanding.

surface chalk, and loose or flaking paint. Wash unpainted



timber surfaces with a suitable timber cleaner to remove excess tannins or greyed timber. New timber surfaces should also be sanded smooth and dusted down prior to priming. Fill nail holes, imperfections, and cracks with a suitable filler, sand, and dust off. For set plaster or plaster, glass use a sealer binder as the precoat.

## Mixing

Mix with a slow-speed drill and helical spinner head for 60 seconds. Mix until uniform.

## Application Method

<b>Method</b>	Airless sprays	Air spray	Brush (touch-up)
<b>Thinner (max. vol.)</b>	Water (5%)	Water (5%)	Water (5%)
<b>Pump ratio minimum</b>	40:1		
<b>Tip size</b>	021"	1.6 mm	217
<b>Tip pressure</b>	150 bar/2200 Psi	4 – 5 bar	
<b>Cleaning of tools</b>	Water		
<b>Indicated film thickness, dry</b>	70 microns		

<b>Indicated film thickness, wet</b>	90 microns
--------------------------------------	------------

**Conditions:** Do not apply when relative humidity exceeds 80% or when the surface to be coated is less than 3°C above the dew point.

## Storage

<b>Time</b>	12 Months in Unopened Packs.
<b>Temperature</b>	Storage temperature between 5°C and 35°C.
<b>Protection</b>	Should be stored inside and protected from frost, weather, moisture, direct sunlight, and contamination ingress.

## Remarks

<b>Preceding Coat</b>	-
<b>Subsequent Coat</b>	EZ2KV (if necessary), Intopa, Neverpeeled, Trim

A completely clean surface is mandatory to ensure inter-coat adhesion, especially at long recoating intervals. Any dirt, oil, and grease must be removed, e.g., with a suitable detergent. Salts should be removed by freshwater hosing. To check the adequate quality of the surface cleaning a test patch is recommended before actual recoating.

## Film Thickness

May be specified in another film thickness than indicated depending on purpose and area of use.

This will alter the spreading rate and may influence drying time and recoating intervals.



## Recoating and drying/curing time

2 hours @25°C/50% relative humidity. Under cooler or more humid conditions allow longer drying times. If recoating with a solvent-based paint, allow 1-Step to dry for 24hr before recoating.



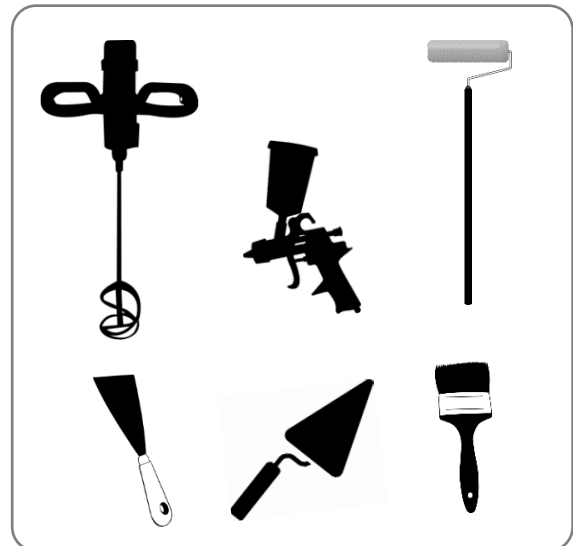
## Safety

Handle with care. Before and during use, observe all safety labels on packaging and paint containers, consult Chemstuk material safety data sheets and follow all local and national safety regulations. Harmful or fatal if swallowed; immediately seek medical assistance. Avoid inhalations of possible solvent vapors or paint mist, as well as paint contact with skin and eyes. Apply only in well-ventilated areas and ensure that adequate

forced ventilation exists when applying paint in confined spaces or when the air is stagnant. Always take precautions against the risks of fire and explosions. Please follow the instruction on dangerous good transport according to Flammable Paint UN 1263 (Part A) and Corrosive Liquid UN 1760 (Part B).

## Application Equipment

The use of correct application equipment is critical as incorrect application tools can result in poor finishing and incorrect material consumption. Always test the application equipment prior to commencing work. The following equipment is recommended for this application.



## DISCLAIMER

This Technical Data Sheet is to be used as a guide only; it is NOT a specification. Chemstuk Pty Ltd has no control over the use or storage of this product and therefore does not accept liability in this regard. Any verbal advice given should not be regarded as authoritative information. This information is subject to change without notice, therefore all applicators should ensure they have current information. This product is intended for the use only of skilled tradesman and where applicable, statutory licensed tradesmen experienced and trained in the use of this product. Due to differences in substrates, application methods and local conditions purchasers of these products must ensure that it is suitable for their specific application before using these products. While the information contained in the TDS and SDS is accurate to the best of our knowledge, Chemstuk Pty Ltd cannot guarantee that the information contained is wholly comprehensive. Subject to the provisions of the Trade Practices Act, the company's liability in relation to defective products shall be limited to replacement of the product, if the product is proven to be defective.